

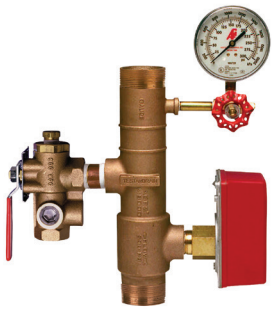
# RISERPACK®

## Sectional Floor Control Risers

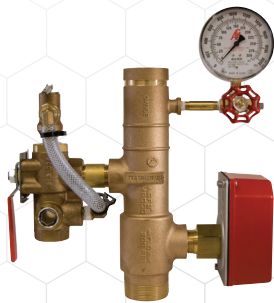
WWW.RISERPACK.COM

### Commercial RISERPACK

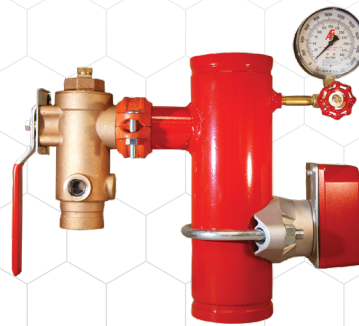
The core of a COMMERCIAL **RISERPACK™** is a U.S. made, cast bronze or powder-coated, schedule 40 steel riser manifold. All risers are rated at 300 PSI and allow for right or left and vertical or horizontal installation.



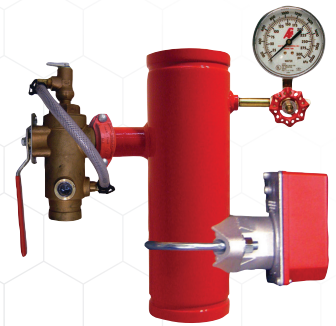
2" M8000  
Bronze  
THD X THD



2" M8011  
Bronze  
THD X GRV



4" M8000  
Steel  
GRV X GRV



4" M8011  
Steel  
GRV X GRV

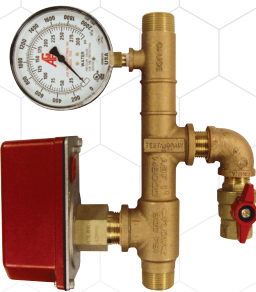
### Residential RISERPACK

The core of a RESIDENTIAL **RISERPACK™** is a bronze riser manifold designed to fit in standard stud wall framing. The riser provides all required signage for flow direction, test and drain outlet, and pressure gauge location. Lettering appears on both sides allowing for right or left installation.

#### 13D Systems



1 1/4" M8000 13D  
THD X THD



1" M8000 13D  
THD X THD

#### 13R Systems



1 1/2" M8000 13R  
THD X THD



1 1/2" M8011 13R  
THD X THD

**Reliability, Versatility, Code Compatibility**

# RISERPACK®

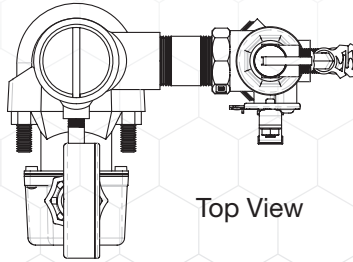
## Specialty Floor Control Risers

WWW.RISERPACK.COM

### Corner Mount RISERPACK

The core of a COMMERCIAL **RISERPACK™** Model 8611 is a U.S. made, cast bronze or powder-coated, schedule 40 steel riser manifold. All risers are rated at 300 PSI and allow for right or left and vertical or horizontal installation.

- Corner Mount
- Horizontal or Vertical Installation
- 300 PSI rating



Top View



**M8611**  
Steel  
GRV X GRV

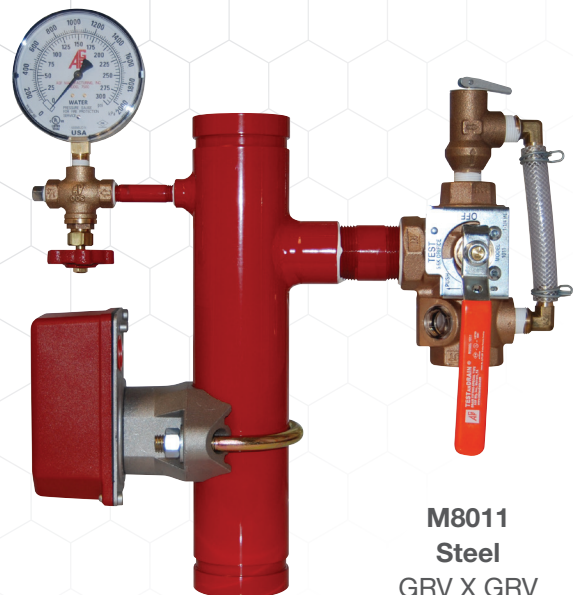
The Model 1000/1011 **TESTANDRAIN®** valve offers a unique design benefit that allows system access through the valve for system integrity testing and/or installation of the optional relief valve trim kit (Model 8011) without draining the system.

### RISERPACK with M1011

The AGF Commercial **RISERPACK™** Model 8011 is a compact pre-packaged economical riser assembly designed for NFPA 13 wet fire sprinkler systems. Every model utilizes an appropriate sized UL Listed/FM Approved patented AGF Model 1011 **TESTANDRAIN®** valve designed to comply with NFPA 13 requirements requiring a sight glass for verification during testing through a properly sized orifice. All **RISERPACKS™** are assembled with UL Listed/FM Approved AGF Model 7500 Pressure Gauge (300 PSI), Model 7600 ¼" Universal Valve, and a Saddle Mount Water Flow Switch as required by NFPA 13. The Model 8011 includes UL Listed/FM Approved AGF Model 7000 Pressure Relief Valve (175 Rated); other ratings are available and may be substituted: 165, 185, 195, 205, 225, or 250.

- Horizontal or Vertical Installation
- 300 PSI rating

The Model 1011 **TESTANDRAIN®** valve offers a unique design benefit that allows system access through the valve for system integrity testing and/or installation of the relief valve trim kit (Model 8011) without draining the system.



**M8011**  
Steel  
GRV X GRV

*Reliability, Versatility, Code Compatibility*